

**Winessense®**  
a combination of  
advanced software  
models and a dense  
sensor network for  
viticulture



## benefits



Vukasin Pejovic  
vukasin@atfield.tech  
+381 63 388 089  
Atfield Technologies d.o.o.  
Jug Bogdana 30, 21220 Becej, Serbia

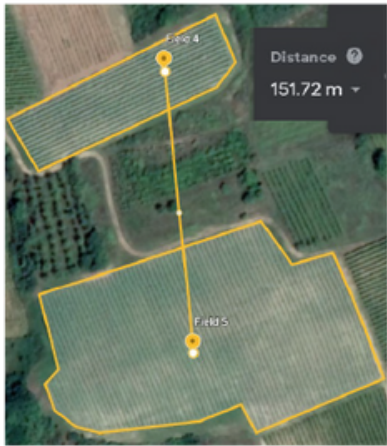
Visit us at:  
[www.atfield.tech](http://www.atfield.tech)  
[www.linkedin.com/company/atfield-tech](https://www.linkedin.com/company/atfield-tech)



# Digital Assistant from Your Vineyards

# Microclimates in vineyards as your advantage

Two vineyard plots are exposed to different powdery mildew infection pressures, May - June 2021.



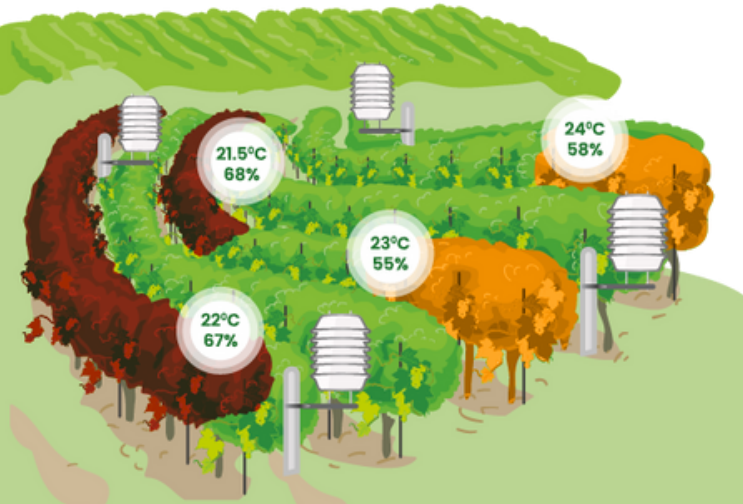
Disease pressure dates:

field 4: 13 May 20 May 1 Jun 15 Jun  
field 5: 1 Jun 15 Jun



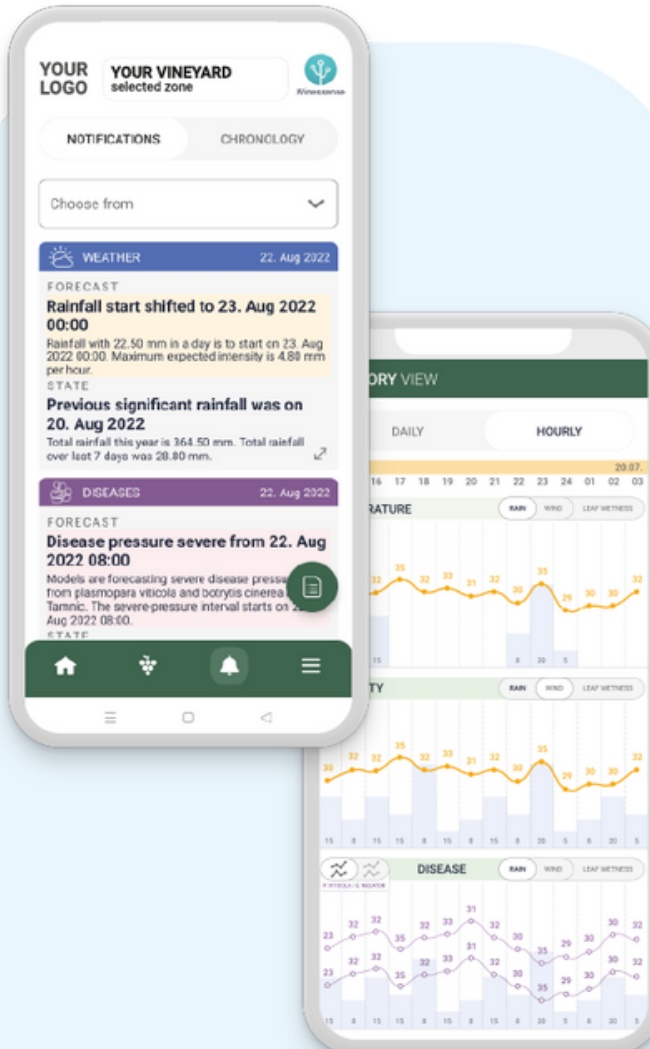
Field 4 is twice as sensitive during the same timeframe.

Vineyard sections are exposed to different microclimates.



## mobile app

Track the state of your vineyards via our mobile app and its timely notifications function.



## savings examples during a single season

Savings on 3 hectares



2 spray treatments less  
3000 liters of water less



120 hours less in  
vineyard monitoring



CO<sub>2</sub> 52 kg less

Savings on 12 hectares



3 spray treatments less  
12000 liters of water less



600 hours less in  
vineyard monitoring



CO<sub>2</sub> 205 kg less

Call us at: +381 63 388 089

Write to us at: [vukasin@atfield.tech](mailto:vukasin@atfield.tech)

